



### Headline Statistics

WCWSS DAM STORAGE  
(%)

**59.0**

WEEKLY DAM LEVEL CHANGE  
(%)

**-0.50**

AVERAGE TOTAL  
DAILY WATER USE  
(MLD)

**828**

### Water Resource Status

WATER RESOURCE STATUS	MEANING OF CURRENT STATUS
Wise Water Use	<p>Although the water resource status is "wise water use", it is important to continue using water wisely.</p> <p><b>Note:</b> The Water Resource status is updated every three (3) months. It will next be updated in May.</p>

### Water Production from Different Sources

MAJOR DAMS  
(MLD)

**823**

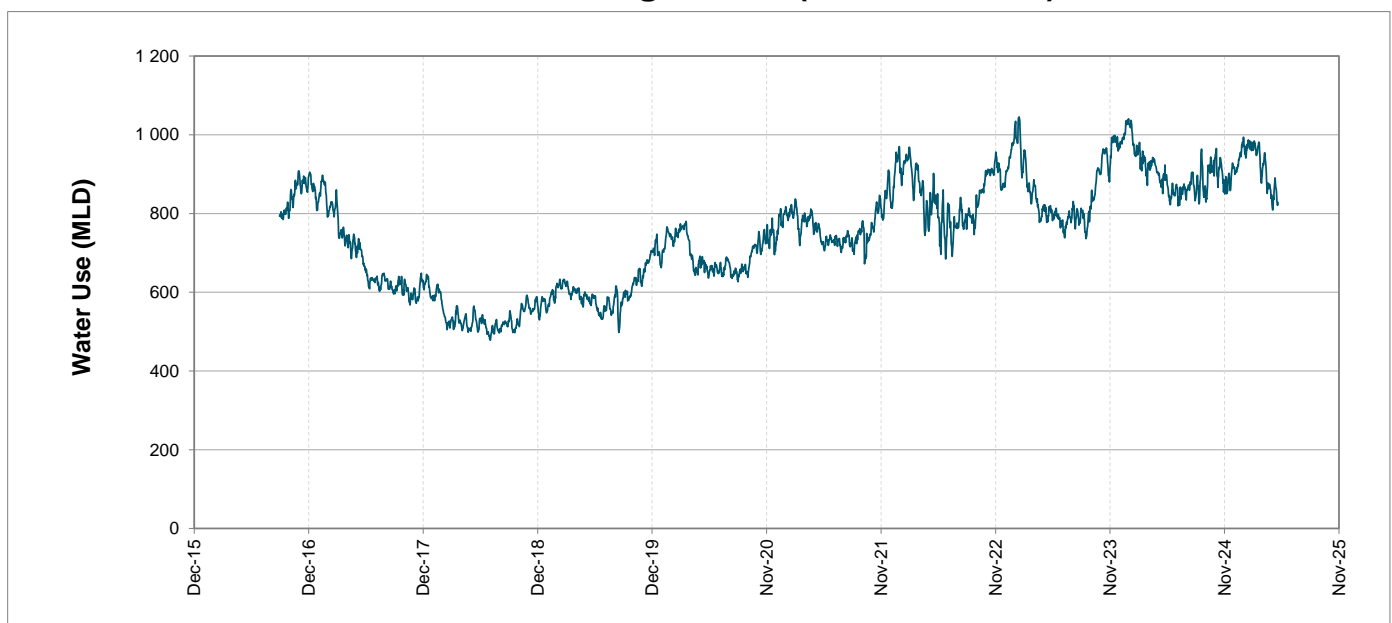
MINOR DAMS  
(MLD)

**2**

GROUND WATER  
AND SPRINGS  
(MLD)

**3**

### Overall Water Usage Trend (2010 - Present)



WCWSS means Western Cape Water Supply System

MLD means million litres per day

More information on Water Saving and Restrictions is available on the City of Cape Town's 'ThinkWater' website

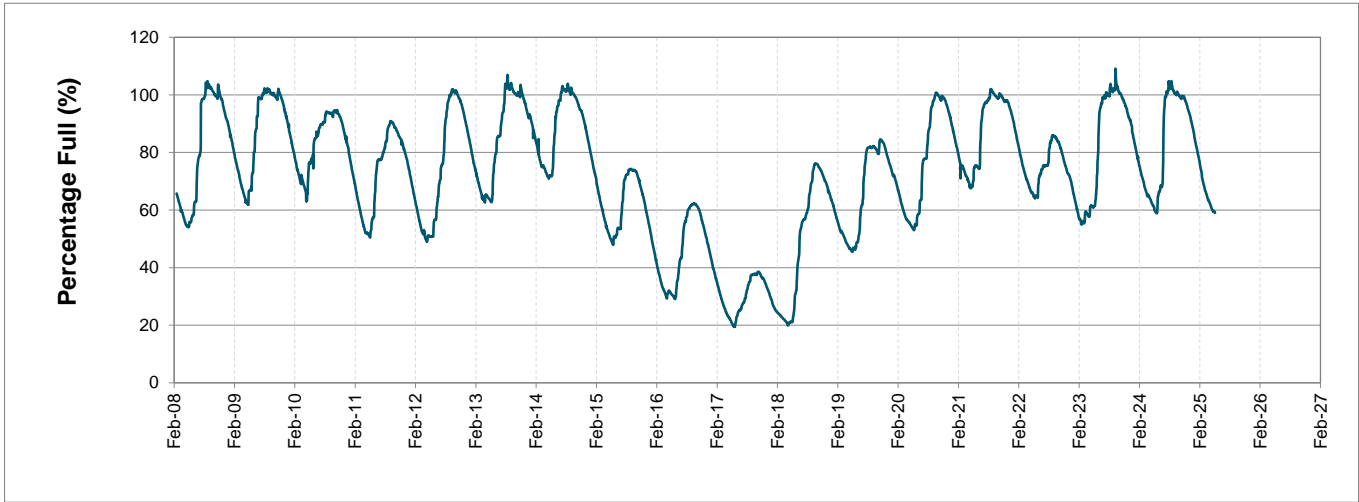
Water Stored in Major Dams (WCWSS)

Overall Percentage Full 59.0%

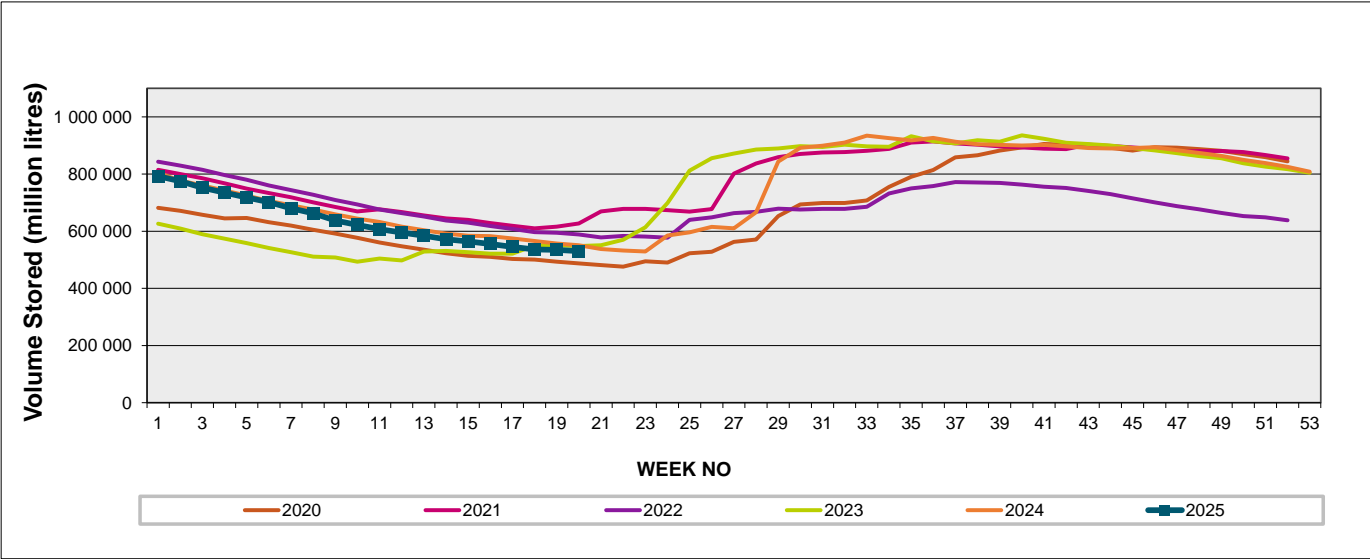
Weekly Change -0.5%

MAJOR DAMS (WCWSS)	STORAGE						
	CAPACITY	%	%	%	%	%	%
	MI	19 May 2025	Previous week	2024	2023	2022	2021
BERG RIVER	130 010	61.7	60.5	70.7	86.8	67.8	76.4
STEENBRAS LOWER	33 517	39.7	41.9	55.7	53.5	61.6	57.5
STEENBRAS UPPER	31 767	90.0	90.4	80.5	94.9	83.7	54.3
THEEWATERSKLOOF	480 188	59.2	59.9	58.8	58.7	67.0	75.4
VOËLVLEI	164 095	57.7	58.3	50.4	39.4	57.2	58.5
WEMMERSHOEK	58 644	50.1	50.4	63.8	71.5	50.8	58.7
TOTAL STORED	898 221	530 347	534 419	538 779	549 578	580 723	628 185
% STORAGE		59.0%	59.5%	60.0%	61.2%	64.7%	69.9%

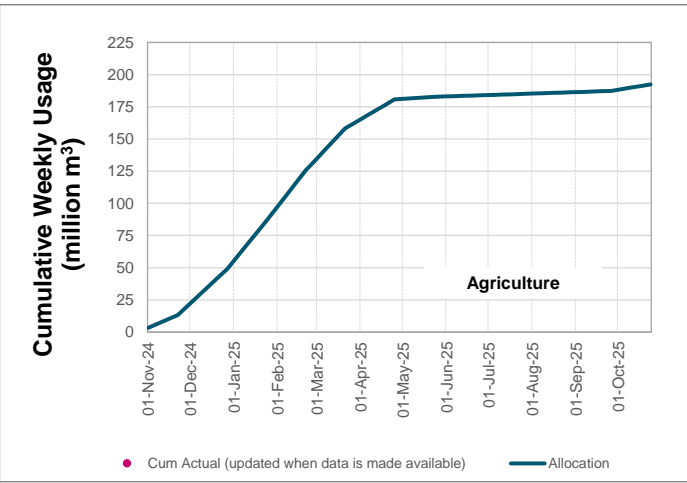
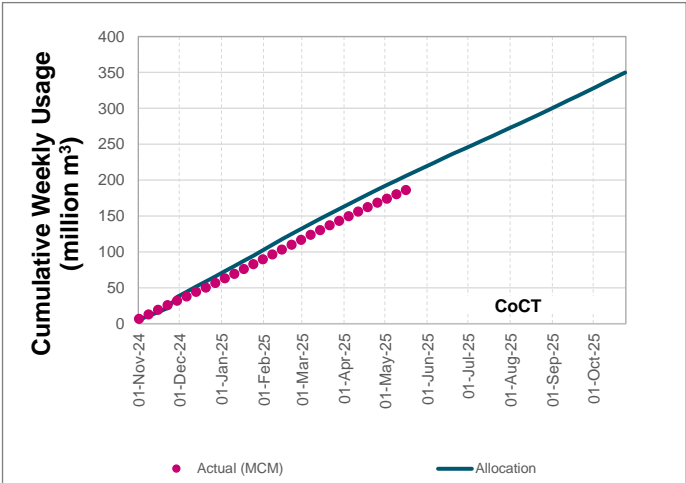
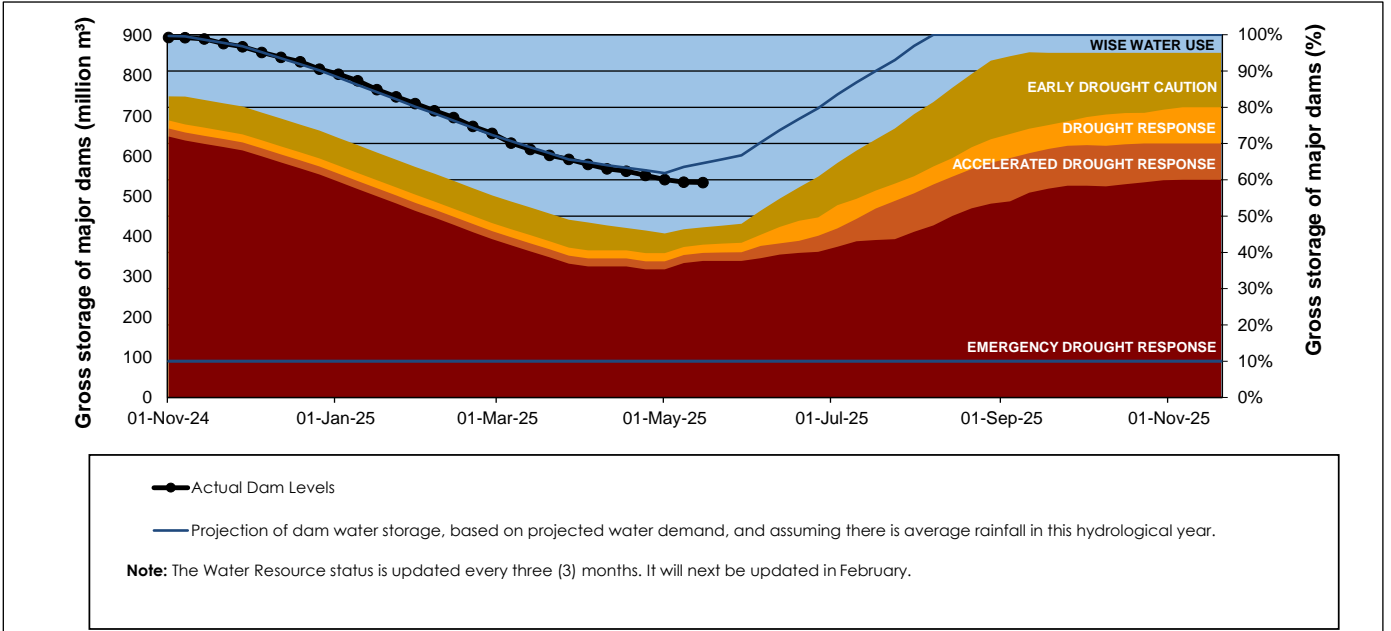
WCWSS Storage Record (2008 - Present)



WCWSS Comparative Storage Graph



Projected WCWSS Dam Storage Levels



Water Stored in Minor Dams

Overall Percentage Full	31.1	Weekly Change	-0.07
-------------------------	------	---------------	-------

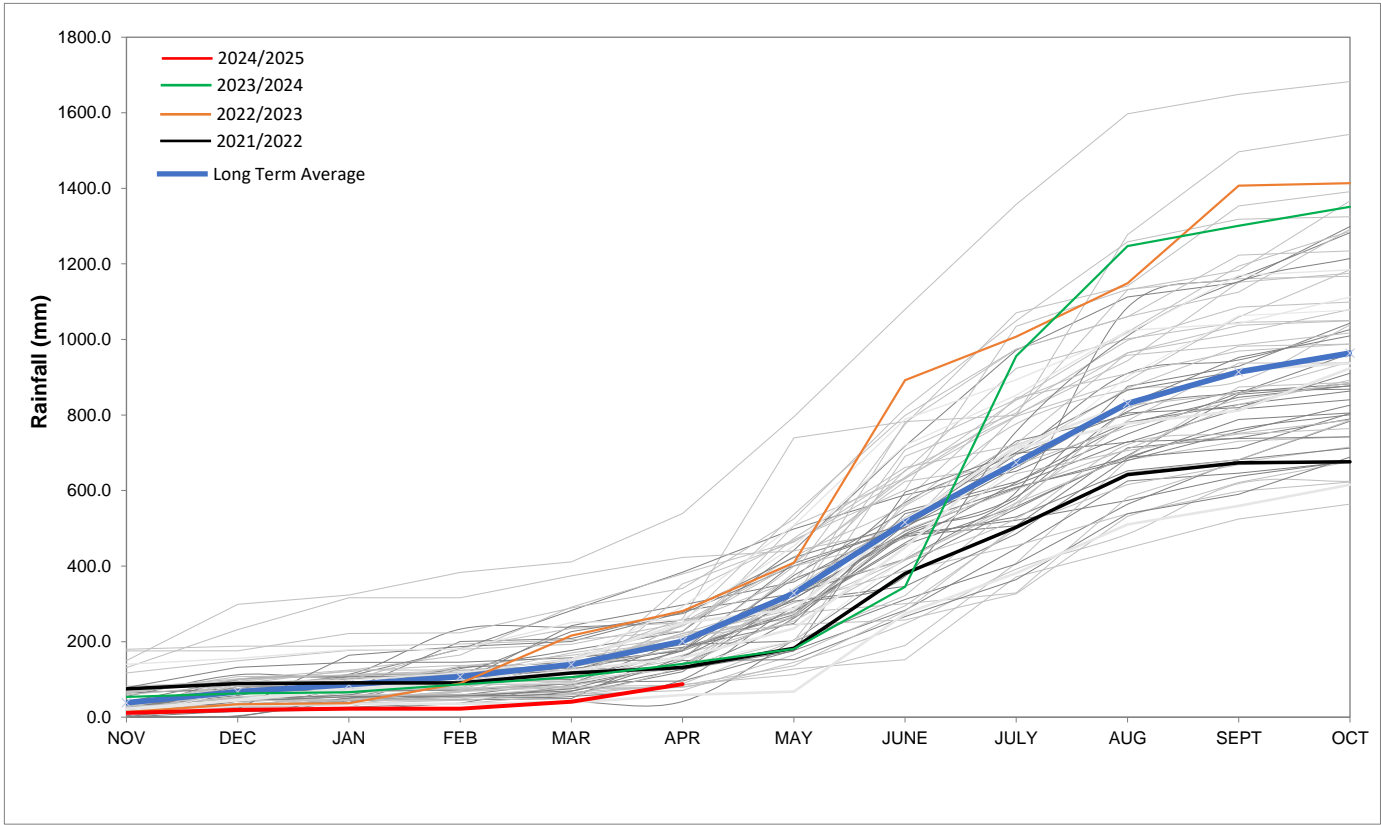
MINOR DAMS	STORAGE						
	CAPACITY	%	%	%	%	%	%
	MI	19 May 2025	Previous week	2024	2023	2022	2021
ALEXANDRA (Table Mountain)	126	36.4	34.5	35.2	87.5	54.3	0.0
DE VILLIERS (Table Mountain)	243	42.6	39.4	83.1	99.7	69.2	53.5
HELY-HUTCHINSON (Table Mount)	925	12.0	11.0	0.0	85.2	27.9	0.0
KLEINPLAATS (Simon's Town)	1 368	5.9	7.9	40.1	9.2	43.6	44.9
LAND-EN-ZEEZICHT (Helderberg)	451	72.1	72.0	100.0	83.2	74.4	67.5
LEWIS GAY (Simon's Town)	182	97.7	76.4	29.3	83.0	0.0	53.2
VICTORIA (Table Mountain)	128	29.7	58.5	73.7	100.4	50.6	0.0
WOODHEAD (Table Mountain)	954	49.9	49.5	37.4	70.5	61.3	69.1
Total Stored	4 377	1360.2	1363.3	1744.2	2601.6	2068.7	1781.9
Percentages stored		31.1	31.1	39.8	59.4	47.3	40.7

# Rainfall Recorded

RAINFALL (mm)	12-May	13-May	14-May	15-May	16-May	17-May	18-May	May	
								Total*	LT Average
Blackheath Upper	0.0	0.0	0.0	0.0	0.0	0.0	0.0	10.8	55.7
Brooklands	0.0	0.0	0.0	0.0	0.0	0.0	0.0	31.0	107.1
Newlands	0.0	0.0	0.0	0.0	0.0	0.0	0.0	22.5	210.0
Steenbras	0.0	0.0	0.0	0.0	0.0	0.0	0.0	49.0	116.9
Table Mountain (Woodhead)	0.0	0.0	0.0	0.0	0.0	0.0	0.0	31.5	188.7
Theewaterskloof	0.0	0.0	0.0	0.0	0.0	0.0	0.0	29.3	48.5
Tygerberg	0.0	0.0	0.0	0.0	0.0	0.0	0.0	8.8	60.0
Voëlvlei	0.0	0.0	0.0	0.0	0.0	0.0	0.0	22.5	69.2
Wemmershoek	0.0	0.0	0.0	0.0	0.0	0.0	0.0	38.8	120.1
Wynberg	0.0	0.0	0.0	0.0	0.0	0.0	0.0	23.7	142.8
Notes: *Total/cummulative rainfall for month indicated above									
LT: Long Term									

## Accumulated Monthly Rainfall at Wemmershoek

Note: Wemmershoek station used due to long record and mountainous location



## Drinking Water Quality

SAMPLE PASS RATE		
Month	Water Quality Compliance (%)	Target (%)
Nov-21	99.11	98
Dec-21	99.09	98
Jan-22	99.04	98
Feb-22	99.04	98
Mar-22	98.99	98
Apr-22	98.96	98
May-22	98.90	98
Jun-22	98.96	98
Jul-22	99.46	99
Aug-22	99.47	99
Sep-22	99.46	99.00
Oct-22	99.47	99.00
Nov-22	99.45	99.00
Dec-22	99.36	99.00
Jan-23	99.36	99.00
Feb-23	99.35	99.00
Mar-23	99.29	99.00
Apr-23	99.24	99.00
May-23	99.24	99.00
Jun-23	99.18	99.00
Jul-23	99.19	99.00
Aug-23	99.14	99.00
Sep-23	99.10	99.00
Oct-23	99.10	99.00
Nov-23	99.04	99.00
Dec-23	99.15	99.00
Jan-24	99.16	99.00
Feb-24	99.12	99.00
Mar-24	99.16	99.00
Apr-24	99.20	99.00
May-24	99.21	99.00
Jun-24	99.26	99.00
Jul-24	99.27	99.00
Aug-24	99.31	99.00
Sep-24	99.33	99.00
Oct-24	99.37	99.00
Nov-24	99.42	99.00
Dec-24	99.42	99.00
Jan-25	99.48	99.00
Feb-25	99.57	99.00
Mar-25	99.61	99.00

This table shows CCT drinking water quality compliance according to the South African National Standard 241:2015. Compliance, measured against all prescribed chemical and microbiological components, consistently exceeds the very high CCT target of 99%. (Overall compliance percentages of continuous sampling and analysis are released on a monthly basis.